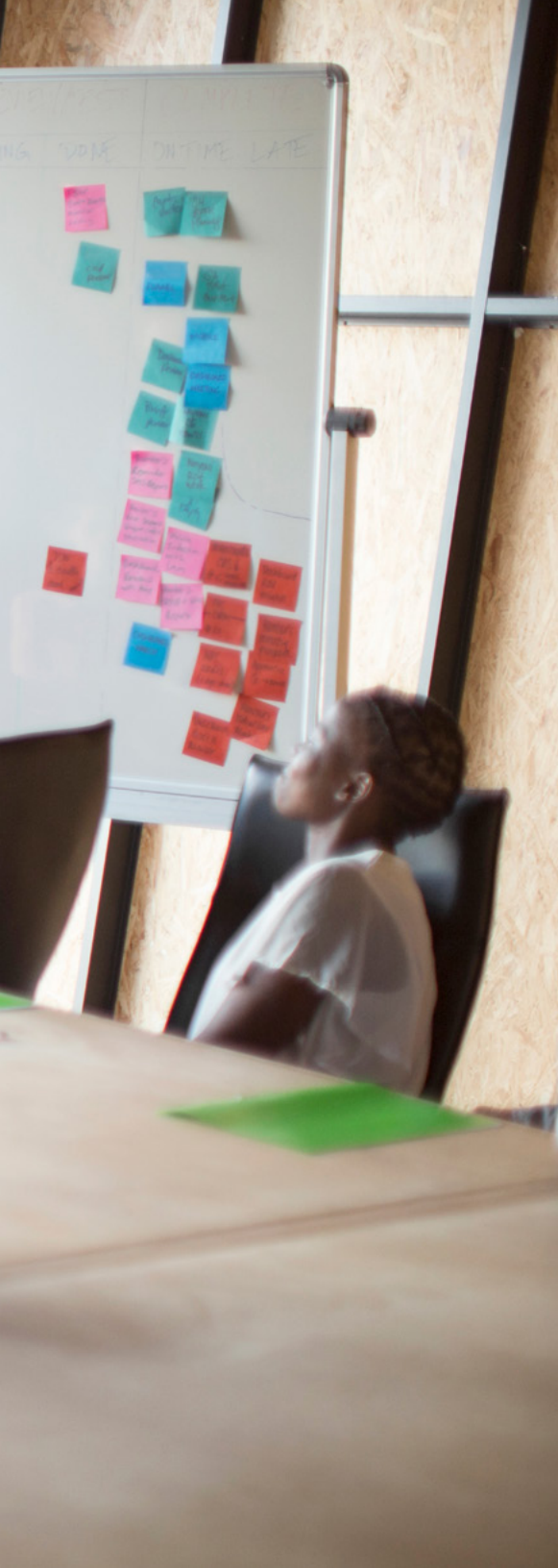


# Corporate Risk & Broking

Summer Internship Program







**At WTW, our purpose is to transform tomorrows.**

We provide data-driven, insight-led solutions in the areas of people, risk and capital to propel the world's leading businesses forward.

When you join an early careers program at WTW, you're empowered to develop your skills and make a difference by applying your unique perspective. We fuse our passion, intelligence and imagination to make real impact — confident that behind every one of us is all of us.

**About the program**

WTW's Corporate Risk & Broking (CRB) summer internship is a paid program that runs for eight weeks. The program provides an excellent opportunity for students one year away from graduation to gain hands-on experience and contribute to our business over the course of the summer. Interns will get involved in team projects presentations, and experience a range of speakers including panel discussions, and networking opportunities with colleagues at different levels.

At the end of the summer, high-performing interns will be considered for the full-time Graduate Development Program.

**Our culture of inclusion and diversity**

We're proud of our culture and committed to making a real impact for our clients and colleagues. That's why we constantly challenge ourselves to grow our inclusive culture and create a place where we're bolder together. Our inclusion networks help us to live our values and our defined inclusion and diversity commitments improve and measure our progress. For you, this means joining a company where you can bring your whole self to work.

The structured training program is designed to give you the skills you need to build a successful career at WTW in the following business areas:

# Summer intern criteria and competencies



## Summer intern criteria

- Current matriculating students who are rising seniors
- Cumulative GPA of 3.0 or higher
- Business, Liberal Arts, & Risk Management majors
- Previous internship experience, preferably in the insurance industry
- Demonstrated interest in the Insurance industry



## Summer intern competencies

- Analytical
- Attention to detail
- Communication
- Continuous learning



# Industry divisions



Here are some of the Industry divisions that you could work in...

You will be working alongside colleagues of all levels, and learn from WTW's senior leaders globally, supporting the development and implementation of new strategies and products.

WTW aligns its Corporate Risk and Broking capabilities with industry specialized knowledge and expertise to focus on 12 industries.





Throughout the program you will experience opportunities of growth through soft skills training, professional development, networking, in-person speaker events as well as structured learning. Additionally, we will pair you with a mentor to help you navigate your career growth. The hybrid working environment allows for a mixture of both remote and in office time including global collaboration across teams. While on program, most colleagues will be in their office three times a week. There are seven locations; Houston, Dallas, New York, Chicago, Atlanta, LA and Toronto.

### Is the program right for you?

- Our structured program with ample opportunity to learn and grow is suitable for graduates who are keen to explore their potential, and find their best fit within our organization
- The program is designed for those who are data and analytically curious, motivated to jump into the dynamic commercial insurance industry

### Inclusion and diversity

At WTW, we know that when our individual talents are combined, we unlock our collective potential and create an environment where everyone can be authentic, curious and bold. We're better together because each of us is different. Our colleague experience has been designed to foster a strong sense of purpose and belonging, where everyone is heard and valued, and can be their authentic self.

[Learn more about inclusion and diversity at WTW here](#)



[Why is inclusion important at WTW? Hear from our colleagues here](#)



### Our culture

We're proud of our culture and committed to making a real impact for our clients and colleagues. That's why we constantly challenge ourselves to grow our inclusive culture and create a place where we're bolder together. Our inclusion networks help us to live our values and our defined inclusion and diversity commitments improve and measure our progress. For you, this means joining a company where you can bring your whole self to work.

[Hear about volunteer days from WTW colleague Pia](#)





A man with a beard and curly hair, wearing a teal button-down shirt, is smiling broadly while looking at a tablet held by a woman. The woman, with her hair in a bun and wearing a blue button-down shirt, is pointing at the screen. They are in a bright office with large windows in the background showing a city skyline and greenery. A white text box is overlaid on the left side of the image.

# The application process



## The application process

1

### Step 1

Online application, including  
CV/resume



2

### Step 2

Invitation to complete online  
assessment and a video interview



3

### Step 3

Virtual assessment  
center/interviews



4

### Step 4

Offer and on-boarding

Visit our webpage  
to begin your online  
application process



10 Questions with WTW Graduate Calice







#### Disclaimer

Willis Towers Watson hopes you found the general information provided in this publication informative and helpful. The information contained herein is not intended to constitute legal or other professional advice and should not be relied upon in lieu of consultation with your own legal advisors. In the event you would like more information regarding your insurance coverage, please do not hesitate to reach out to us. In North America, WTW offers insurance products through licensed entities, including Willis Towers Watson Northeast, Inc. (in the United States) and Willis Canada Inc. (in Canada).

#### About WTW

At WTW (NASDAQ: WTW), we provide data-driven, insight-led solutions in the areas of people, risk and capital. Leveraging the global view and local expertise of our colleagues serving 140 countries and markets, we help you sharpen your strategy, enhance organizational resilience, motivate your workforce and maximize performance. Working shoulder to shoulder with you, we uncover opportunities for sustainable success — and provide perspective that moves you. Learn more at [wtwco.com](https://wtwco.com).



[wtwco.com/social-media](https://wtwco.com/social-media)

Copyright © 2024 WTW. All rights reserved.  
WTW-155201/08/24

[wtwco.com](https://wtwco.com)

